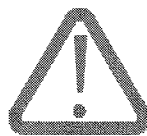




AIR CONDITIONER

CHS 500M300 Z000

USE AND MAINTENANCE MANUAL PART 2

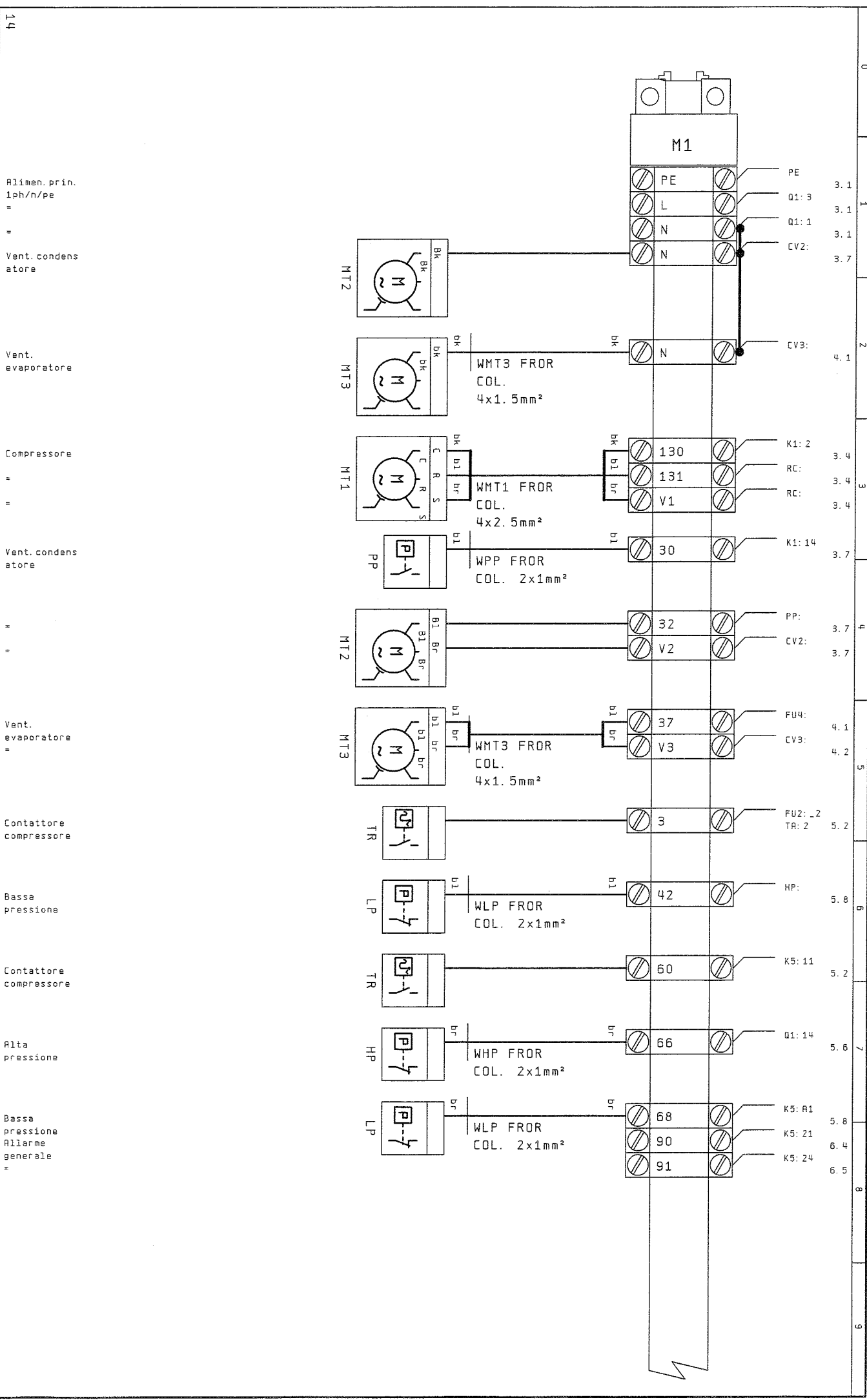


**PLEASE READ CAREFULLY AND FULLY THIS MANUAL BEFORE INSTALLING THE UNIT
THIS MANUAL IS AN INTEGRAL PART OF THE PRODUCT AND SHOULD
ACCOMPANY IT UNTIL IT IS EVENTUALLY DISASSEMBLED**

INDEX part 2

SPECIFIC TECHNICAL FEATURES, TECHNICAL DATA	Page 3
DIMENSIONS	Page 4
MOUNTING CUT-OUT	Page 5
COMPONENTS LAY-OUT	Page 6
ELECTRIC LAY-OUT	Page 7-8-9
COMPONENTS SPARE PARTS LIST	Page 10

Change	Data	Name	Norm	Data	Editor	Appr.	Or.ig.	CHS500M300Z000	M1	HT500MSO	DIN	F9	15
				23. Set. 2002	MAT	23. Set. 2002							



Alimen. prin.
1ph/n/pe

Vent. condensatore

Vent. evaporatore

Compressore

Vent. condensatore

Vent. evaporatore

Contattore compressore

Bassa pressione

Contattore compressore

Alta pressione

Bassa pressione Allarme generale

0
1
2
3
4
5
6
7
8
9

CONFORMITY DECLARATION**MANUFACTURER**

COSMOTEC S.p.A. A Member of the Stulz Group - Sistemi di raffreddamento - Cooling equipment
37067 - via Torricelli - Valeggio s/M - VR - I
tel. (045) 6331615 - fax 6331635 -
Partita IVA - V.A.T. 02165760238

UNIT:

Air conditioner
Cooling Capacity 4,8 kW
Main Volts 230V/1/50Hz
model:
CHS 500M300 Z000

We subscribers declare under our own responsibility that this unit is in conformity with Directives :
73/23/EEC Low voltage => 93/68/EEC
89/336/EEC Electromagnetic Compatibility => 92/31/EEC => 93/68/EEC

Unit reference normatives

Low voltage: CEI EN 60 335-1
Electromagnetic compatibility:
EN 55014, EN61000-3-2, EN61000-3-3

Valeggio s/M 03.10.02

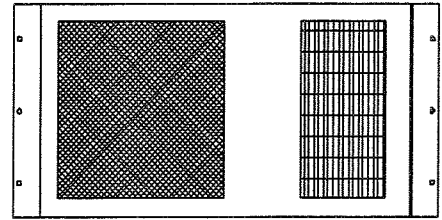
QUALITY CONTROL DEPT
PEROTTIP.

Air conditioner

CHS 500M300 Z000

Technical features

- Structure in painted steel plate RAL7032 orange peel finish
- Scroll compressor including protection
- Refrigerant R407C
- Condenser coil in copper pipe and aluminium fins
- Evaporator coil in copper pipe and aluminium fins
- Refrigerating circuit complete of dehydrating filter, thermostatic valve, and refrigerant gas tank
- Condenser axial fan with thermic protection
- Evaporator axial fan with with thermic protection
- Antifreeze thermostat set at 3°C
- Regulating mechanical thermostat set at 25°C, regulation range 20-46°C, differential 4°C ;
- Refrigerant circuit safety pressostat ;
- Condenser fan pressure switch control (LTD);
- Air filter;
- Adhesive gasket ;
- Dirty filter signal, contacts 1,5 (0,4)A 250Vac
- Terminals.



Unit reference normatives

CEI EN 60 335-1, EN 55014, EN61000-3-2, EN61000-3-3

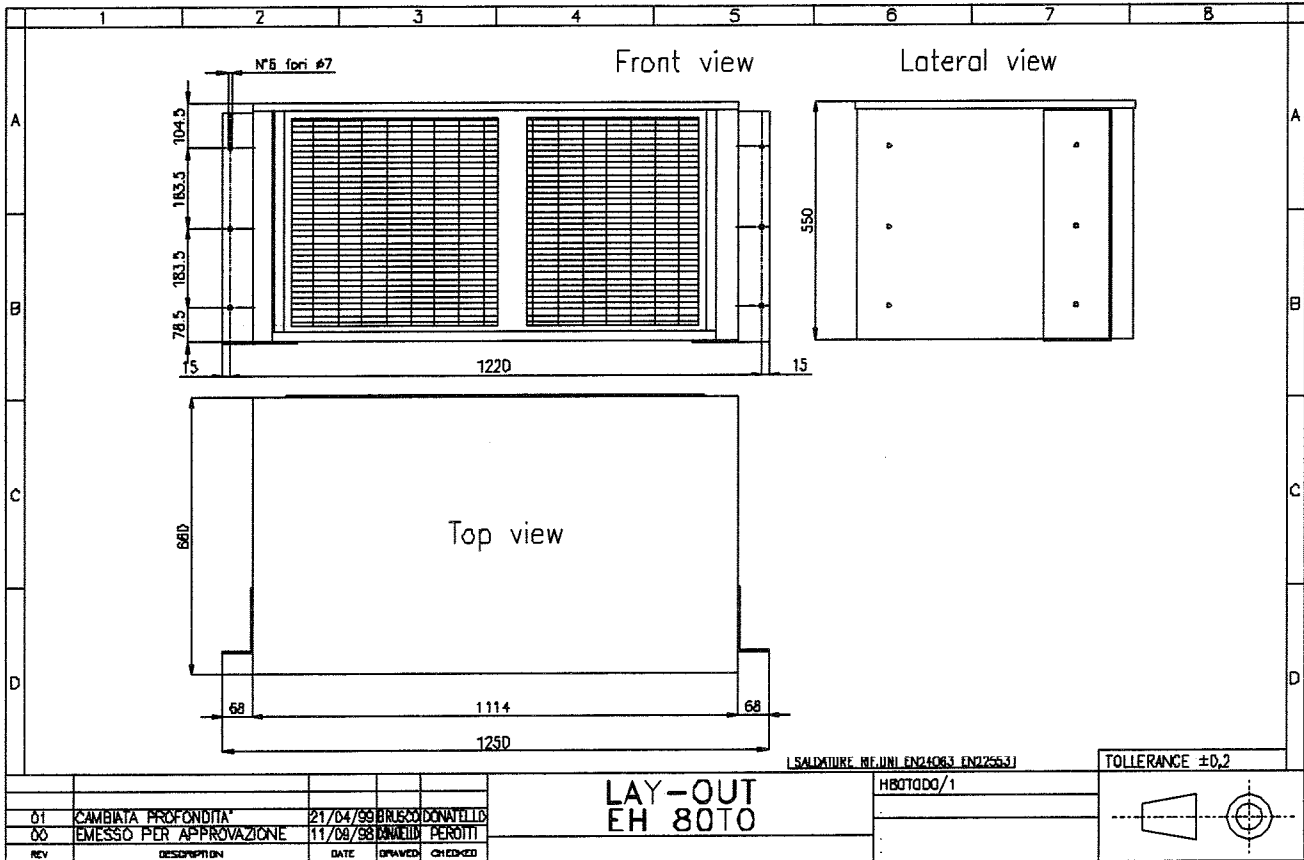
Technical features

Code		CHS 500M300 Z000
Voltage /Phase/Frequency	V ph Hz	230/1/50
Height / Width / Depth	mm	550x1250x660
Cooling capacity *	kW	4,8
Power absorbed	kW	1,7
EER index		2,8
Current absorbed	A	8,5
Current absorbed start	A	35
R134a refrigerant charge	kg	2,4
Condenser fan air flow	mc/h	3110
Condenser fan current absorbed	A	0,58
Condenser fan power absorbed	W	130
Evaporator fan air flow	mc/h	3110
Evaporator fan current absorbed	A	0,58
Condenser fan power absorbed	W	130
Working limits ambient temperature Min/Max	°C	-20/45
Working limits cabinet temperature Min/Max	°C	20/40
Side cabinet protection degree	IP	54
Side ambient protection degree	IP	34
Noise level ca. **	dB(A)	75
Duty cycle	%	100
Weight	kg	120

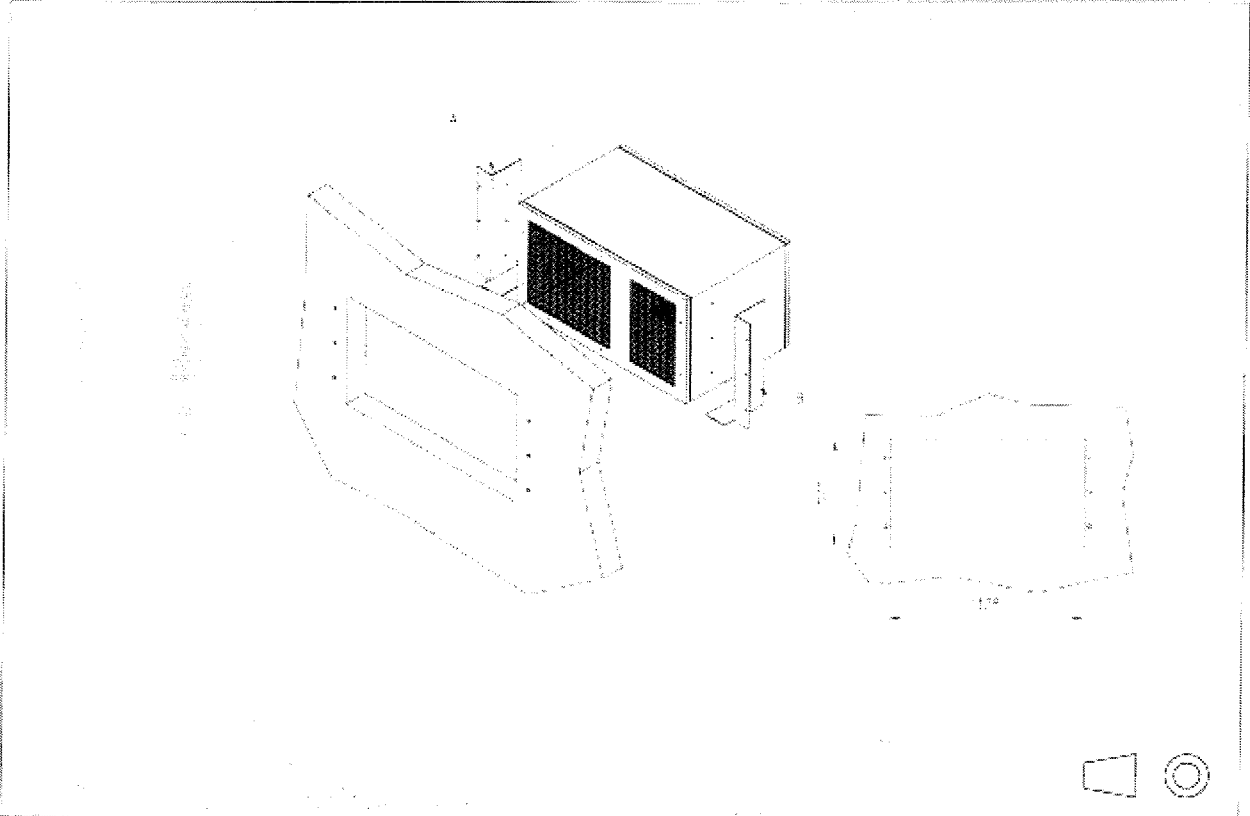
* Ambient temp.35°C Inside cabinet temp. 25°C RH40%

** Tested at 1m distance

Air conditioner
CHS 500M300 Z000
 Dimensions



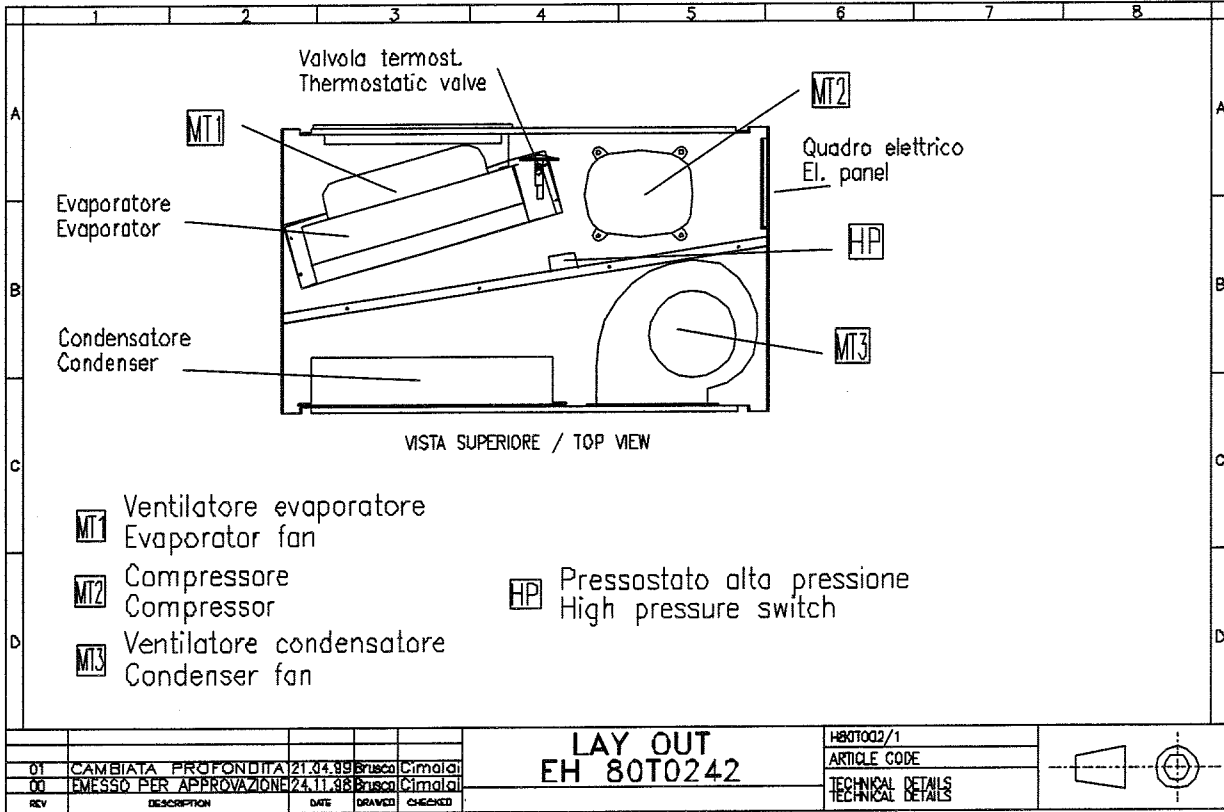
Air conditioner
CHS 500M300 Z000
Mounting cut out

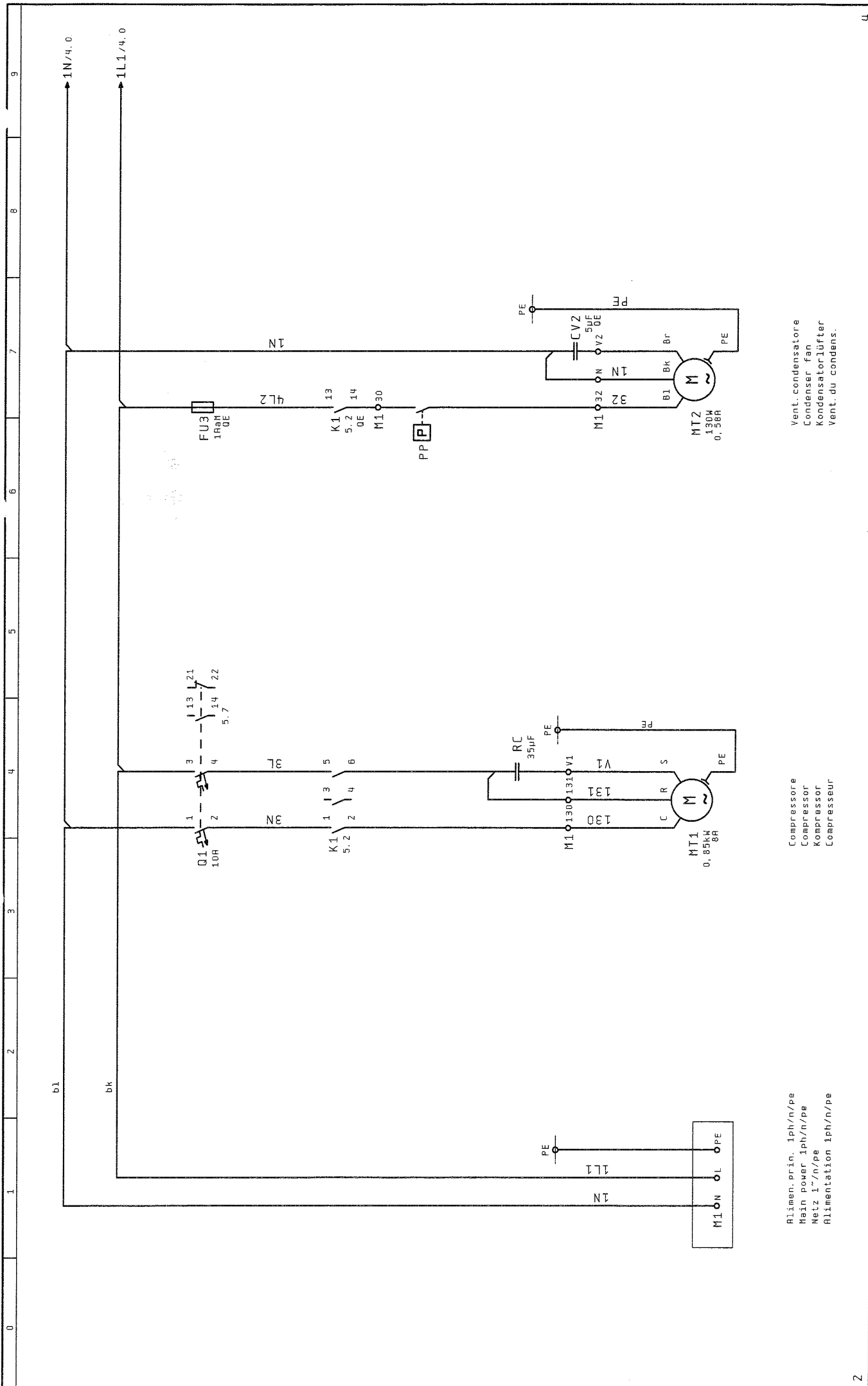


Air conditioner

CHS 500M300 Z000

Components lay out



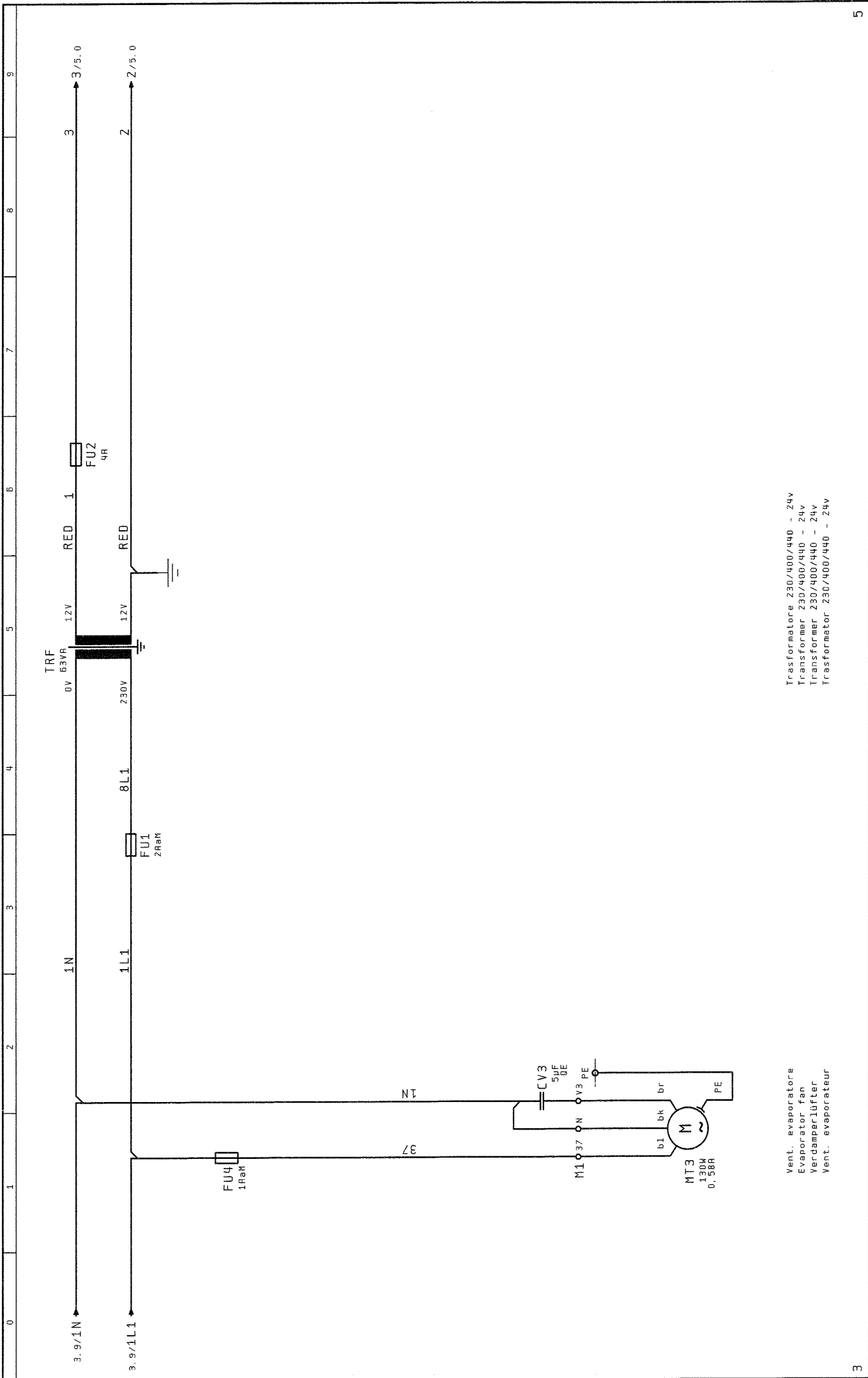


Alimen. prin. 1ph/n/pe
 Main power 1ph/n/pe
 Netz 1~/n/pe
 Alimentation 1ph/n/pe

Compressore
 Compressor
 Kompressor
 Compresseur

Vent. condensatore
 Condenser fan
 Kondensatorlüfter
 Vent. du condens.

Change	Date	Name	Norm	Appr. 23. Set. 2002	Editor MAT	Data
				Orig. 15 Pg		
				DIN		
				HT500MS0		
				Main power 1ph/n/pe		
				CHS500M300Z000		
				STULZ		



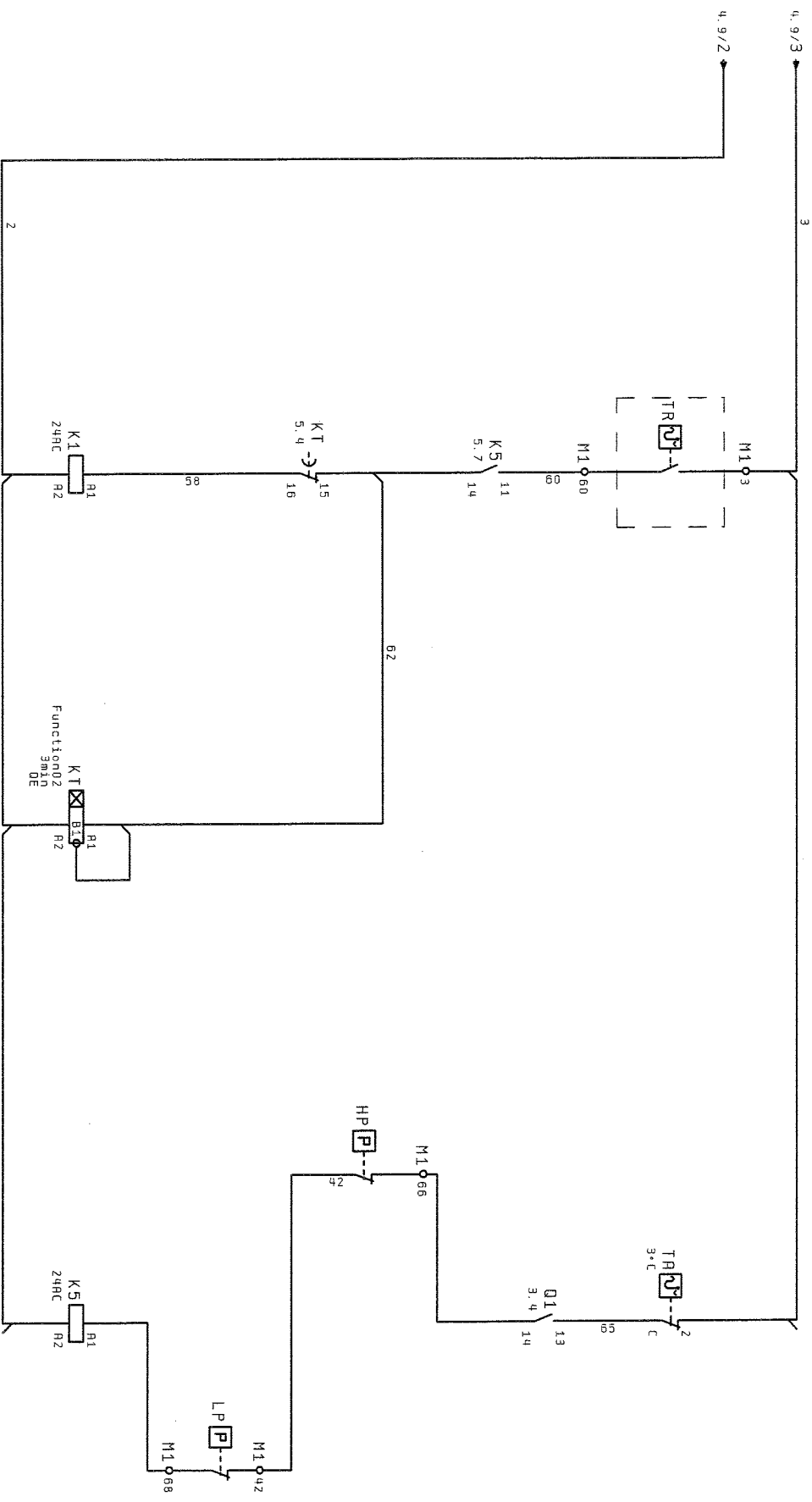
Ventil. evaporatore
 Evaporator fan
 Verdampferlüfter
 Vent. evaporateur

Transformatore 230/400/440 - 24v
 Transformer 230/400/440 - 24v
 Transformator 230/400/440 - 24v
 Transformator 230/400/440 - 24v

3	STULZ		CHS500M300Z000	Evaporator fan	HT500MS0	5
4	Data	Editor	Appr.	Date	DIN	Eg.
5		MAT	23. Set. 2002			15 Fo
6	Name	Name	Name	Name		

Term. regolazione
Regulating therm.
Regeithermostat
Therm. de reglage

Termosl. antigelo
Antifreeze therm.
Frostschutztherm.
Therm. antigel



1 - 2 3 4
3 - 4 3 4
5 - 6 3 4
13 - 14 3. 7

15 - 16 5. 2

11 - 14 5. 2
21 - 24 0. 4

Contattore compressore
Compressor contactor
Kompressor kontaktgeber
Contacteur compresseur

Temporizzatore
Timer delay
Timer
Temporisateur

Alta pressione
High pressure
Überdruckhalter
Haute pression

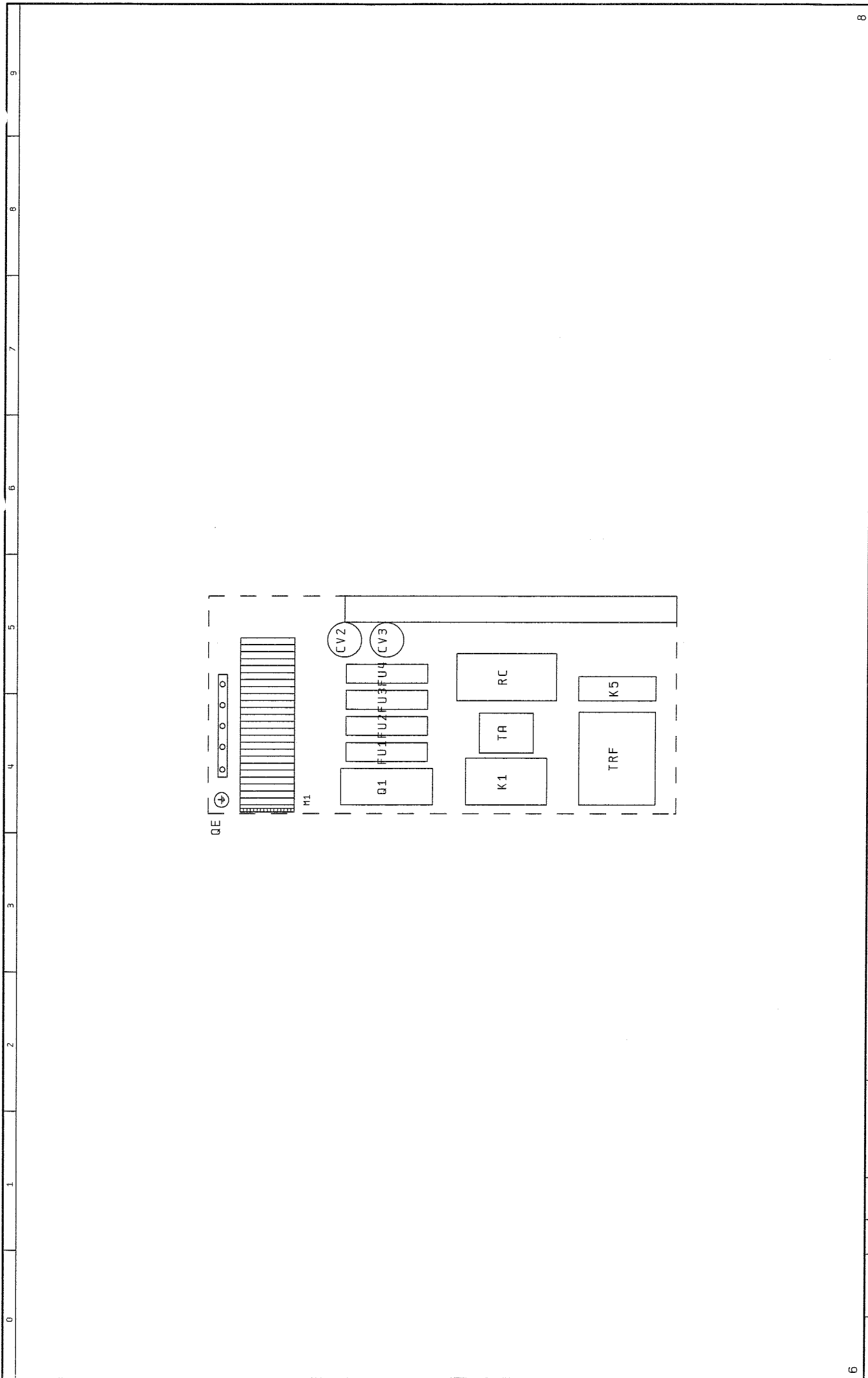
Relè allarme
Alarm relay
Alarm relay
Relais de alarm

Bassa pressione
Low pressure
Unterdruckhalter
Basse pression

Compressor contactor

HT500MSO

Change	Date	Name	Data	Editor	MBT	Norm	23. Set. 2002	Orig.	STULZ	CHS500M300Z000	DIN	HT500MSO	Fg.	15 Fg.
--------	------	------	------	--------	-----	------	---------------	-------	-------	----------------	-----	----------	-----	--------



Change	Data	STULZ		Lay-out components		HT500MS0	
	Editor	MRT		DIN		7	
	Appr.	23. Set. 2002				Fg. 15 Fg.	
	Name	Orig.					

Bill of materials

Item designation	Amount	Designation	Type number	Supplier	Article number
MT1	1	SINGLE-PHASE COMPRESSOR (4D7C)	ZR18K4E-PFJ	COPELAND	0050402704
RC	1	CAPACITOR 35uF- 370VAC 50Hz -(UL)	CV	DUCCATI	0050403035
MT2	1	SINGLE-PHASE FAN 230VAC - 50/60HZ	A4E350 AP06-01	ZIHEL	0100102350
MT3	1	SINGLE-PHASE FAN 230VAC - 50/60HZ	A4E350 AP06-01	ZIHEL	0100102350
TA	1	MECHANICAL THERMOSTAT 0-90°C	541307	IMIT	0300000110
K5	1	RELAY ZCD (DPDT) 5A 24VAC	MY2	DMRON	0300500010
K5	1	SOCKET FOR RELAY ZCD (DPDT)	94.82	FINDER	0300500015
HP	1	HIGH PRESSURE SWITCH	HNSC 130X	SAGINDNYA	0301001012
LP	1	LOW PRESSURE SWITCH Off 2 On3, 2bar	LCB-PR63	SAGINDNYA	0301001022
PP	1	ON-OFF FAN SPEED DEVICE DFF12.5 -ON 16.5	ACB-IB15	SAGINDNYA	0301001050
K1	1	CONTACTOR 7.5kV/400V/17A - 24VAC	3RT1025-1AB00	SIEMENS	0301040200
DI	1	AUTOMATIC CIRCUIT BREAKER ZP-10A	1492-SPZC100	ROCKWELL	0302070410
DI	1	AUXILIARY LATERAL CONTACT TO 1492-SP	1492-ASPH3	ROCKWELL	0302070500
KT	1	MULTIFUNCTION TIMER DELAY 24V/230AC	TV48210	CDC	03030000102
M1	2	TERMINAL PROTECTOR TO RK 2.5-4/35	EAI7B	CONTRA-CLIP	03050000430
M1	19	TERMINAL 2.5-4mmq	RK 2.5-4/35	CONTRA-CLIP	0305000500
M1	2	SEPARATOR TO TERMINAL RK 2.5-4/35	RP2.5/10PA	CONTRA-CLIP	0305000501
M1	1	TERMINAL BLOCK T335	ES35	CONTRA-CLIP	0305000508
M1	1	GROUND TERMINAL TO RK 2.5-4/35	SL10PA	CONTRA-CLIP	0305000620
TRF	1	MONOPHASE TRANSFORMER 0/230/400 - 12/0/12	TRF	ELETTRA RENON	0306000061
FU3	1	UNIPOLAR FUSE CARRIER (32A-690VAC)	PCH 1X38	WEBER	0307000100
FU4	1	UNIPOLAR FUSE CARRIER (32A-690VAC)	PCH 1X38	WEBER	0307000100
FU1	1	UNIPOLAR FUSE CARRIER (32A-690VAC)	PCH 1X38	WEBER	0307000100
FU2	1	UNIPOLAR FUSE CARRIER (32A-690VAC)	PCH 1X38	WEBER	0307000100
FU2	1	FUSE 4A@6 500VAC	CH10	WEBER	0308010040
FU3	1	DELAY FUSE 1A@6 500VAC	CH10	WEBER	0308020010
FU4	1	DELAY FUSE 1A@6 500VAC	CH10	WEBER	0308020010
FU1	1	DELAY FUSE 2A@6 500VAC	CH10	WEBER	0308020020
CV2	1	CAPACITOR 5uF- 450VAC	CV	DUCCATI	0309000050
CV3	1	CAPACITOR 5uF- 450VAC	CV	DUCCATI	0309000050